

Interstate 73 Update

Jimmy Gray

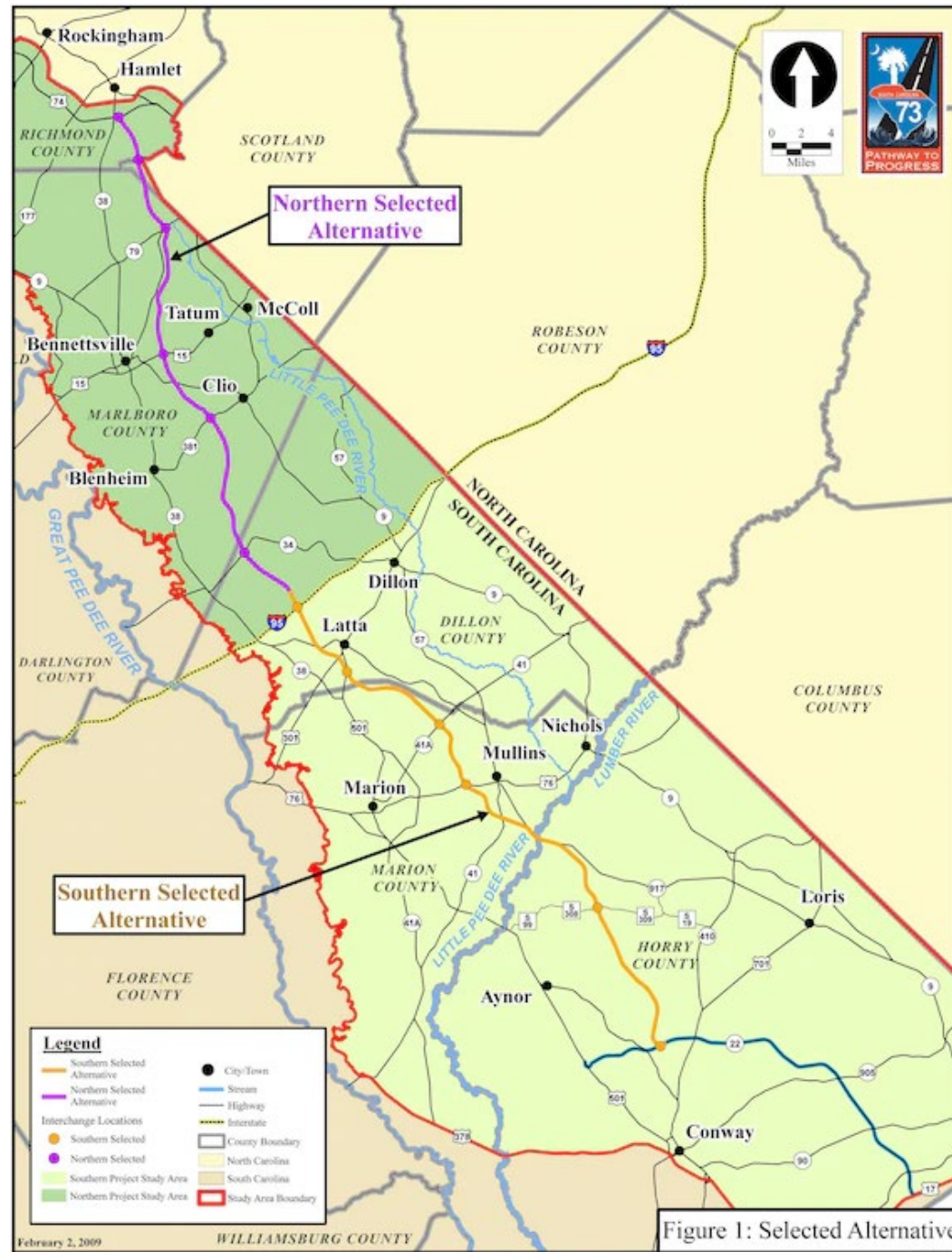
Director of Government Affairs





I-73 Progress during 5 Presidencies

Interstate 73 Permitted Corridor



Issued
August 26,
2017

Environmentalists file lawsuit challenging I-73 construction permits, suggest looking at alternatives

FROM STAFF REPORTS INFO@MYHORRYNEWS.COM Dec 21, 2017 Updated Dec 22, 2017 0



Trucks travel through the interchange of S.C. 31 and S.C. 22. The proposed I-73 will one day feed into S.C. 22 (below).

File



Environmentalists filed a lawsuit Tuesday, claiming the recent approval of federal permits for construction of Interstate 73 to Myrtle Beach was unlawful and was done without taking into account cheaper, more environmentally-friendly options.

The federal suit, filed by the Southern Environmental Law Center (SELC) representing the S.C. Coastal Conservation League, or CCL, claims I-



PREV



Judge dismisses environmentalists' lawsuit over I-73 permits

The order was issued Thursday

BY CHARLES D. PERRY CHARLES.PERRY@MYHORRYNEWS.COM Sep 2, 2021 0



Trucks travel through the interchange of S.C. 31 and S.C. 22. The proposed I-73 will one day feed into S.C. 22 (below).

File



PREV



TO-GO

Federal: \$430M (27%)
State: \$795M (50%)
Local: \$350M (23%)
\$1.6 B

PREVIOUSLY UTILIZED

Federal: \$97M (83%)
State: \$20M (17%)
\$117M

Southern Segment Potential Funding Plan

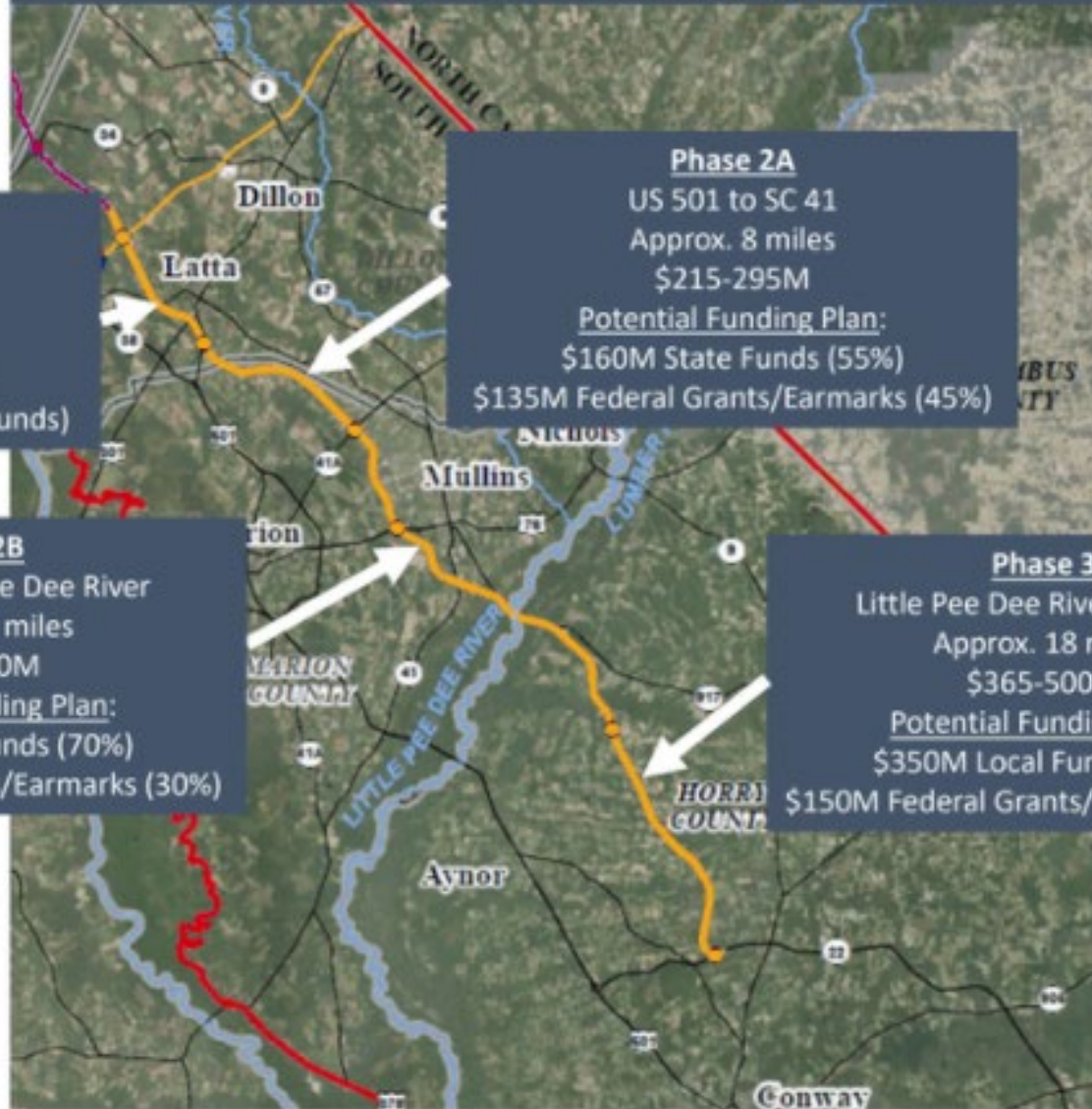
Prepared October 2021 by **SCDOT**

Phase 1
I 95 to US 501
Approx. 6 miles
\$260-300M
Potential Funding Plan:
\$300M State (ARPA/General Funds)

Phase 2A
US 501 to SC 41
Approx. 8 miles
\$215-295M
Potential Funding Plan:
\$160M State Funds (55%)
\$135M Federal Grants/Earmarks (45%)

Phase 2B
SC 41 to Little Pee Dee River
Approx. 11 miles
\$350-480M
Potential Funding Plan:
\$335M State Funds (70%)
\$145M Federal Grants/Earmarks (30%)

Phase 3
Little Pee Dee River to SC 22
Approx. 18 miles
\$365-500M
Potential Funding Plan:
\$350M Local Funds (70%)
\$150M Federal Grants/Earmarks (30%)







Why?

- Over 23,000 SC jobs;
- SC receive \$86.1 million/year;
- Local government \$43.2 million/year;
- Boost tourism to Myrtle Beach by 7%;
- 6 hours clearance time during hurricane – giving 40,000 people time to evacuate.



To Do:

Federal

State

Local

